



MARBELLA
C R I B S
G R O U P

New Modern Villa in Arboleda, Benahavis

1.395.000€



Ref
MCG1680

Beds
4

Baths
4

Plot
625 m²

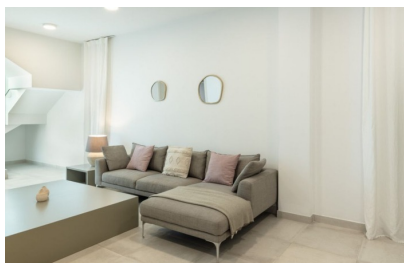
Built
272 m²

www.marbella-cribs.com

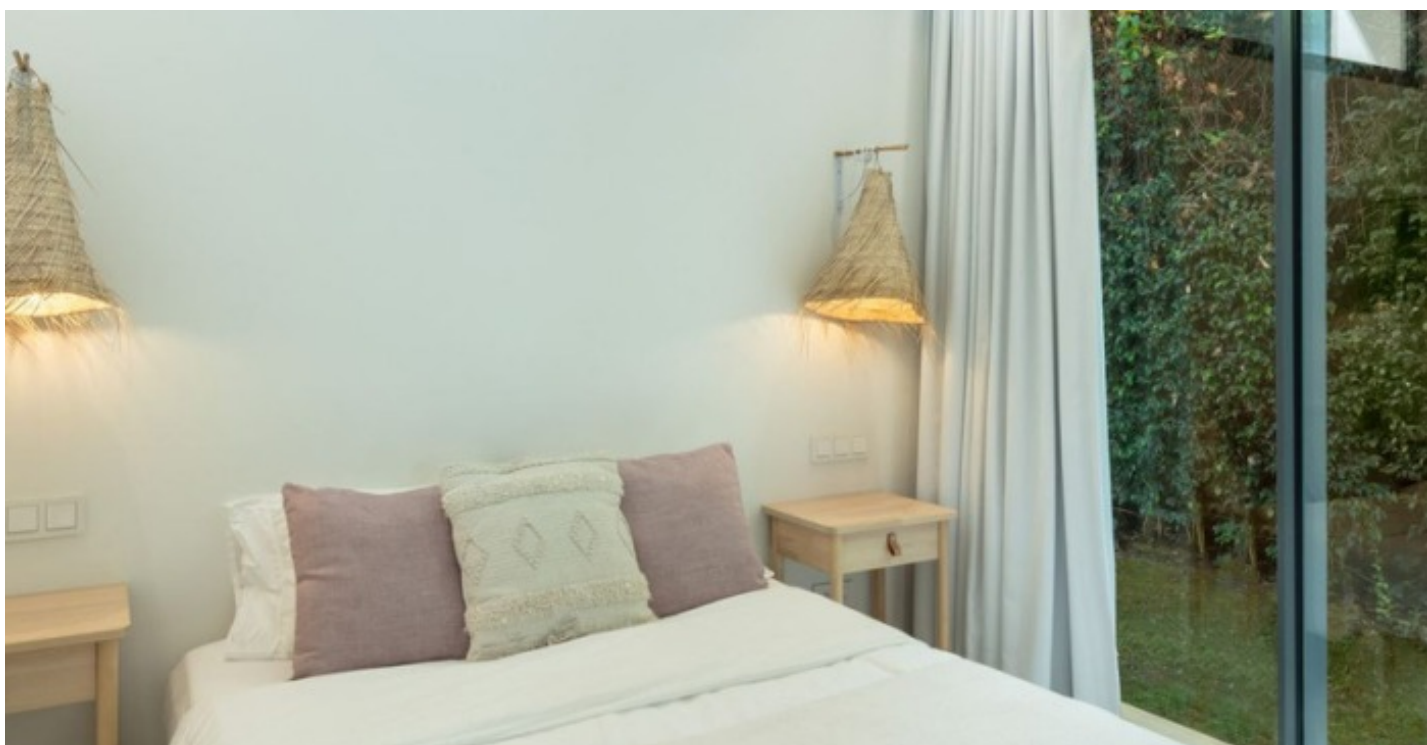
contact@marbella-cribs.com

[+34 623 44 32 13](tel:+34623443213)

The sale price excludes costs and taxes. Buyers should also consider additional expenses, such as registration and notary fees, as well as a 7% ITP or, alternatively, a 10% VAT plus AJD (1.2% on the purchase price) for new properties, provided certain conditions are met. This information is subject to errors, omissions, changes, prior sale, or market withdrawal. An information sheet is available per Decree 218/2005 of October 11th.



Ref	MCG1680
Bedrooms	4
Bathrooms	4
Status	For Sale
Type	Villas
Plot	625 m ²
Built	272 m ²
Terrace	79 m ²
Price	1.395.000€
Location	Benahavís





About this property

Nestled within the secure confines of the esteemed residential enclave of Arboleda, this extensively renovated residence sits at the core of the New Golden Mile, nestled between Estepona and Marbella.

A luminous and inviting abode, it showcases Cortizo sliding glass walls that unveil a sprawling terrace, perfect for gatherings, alfresco dining with a built-in barbecue, and a sizable heated pool. The expansive main living space boasts a soaring ceiling height of 4.5m, infusing the property with light and sophistication, while an open dining area seamlessly blends into a gourmet kitchen with a central island. On the primary floor, three bedrooms with en-suite bathrooms await, all overlooking the verdant tropical gardens, ensuring privacy and tranquility.

The lower level features a cozy TV room, which doubles as a potential fourth bedroom with its own bathroom, along with storage, laundry, and utility rooms. The area is secure and well-connected, with Atalaya Golf and Country Club and top-tier international schools just a short drive away. Nearby, local supermarkets, a variety of shops, bars, restaurants, hair salons, pharmacies, veterinary clinics, and other amenities cater to daily needs.

Arboleda offers a secluded yet convenient setting, with all villas oriented towards the south and west, affording scenic vistas of lush green woodlands spanning over 50,000m² of protected natural terrain.

Contact Us

Phone:

+34 623 44 32 13

Email:

contact@marbella-cribs.com

Real Estate Instagram:

[@MarbellacribsRealEstate](https://www.instagram.com/MarbellacribsRealEstate)

Lifestyle Instagram:

[@MarbellacribsLifestyle](https://www.instagram.com/MarbellacribsLifestyle)





